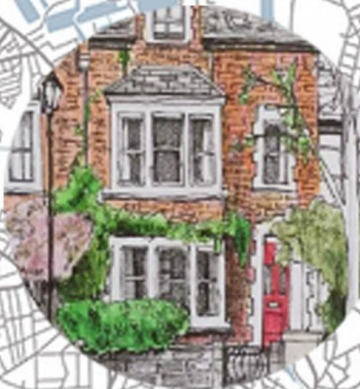


# A SENSE OF PLACE

Postcard Competition  
2021



Camden School for Girls





The aim of the competition is to create a postcard based on the theme

## 'A Sense of Place'.

You could choose to focus on one of these categories:

- **Your local area**
- **A place that is special to you**
- **London**
- **An interior scene**
- **A place from your imagination**
- **Our school community**



# LOCAL AREA

streets, shops, stations, canal, your house,  
your road, street signs, local landmarks, parks, bus stops,



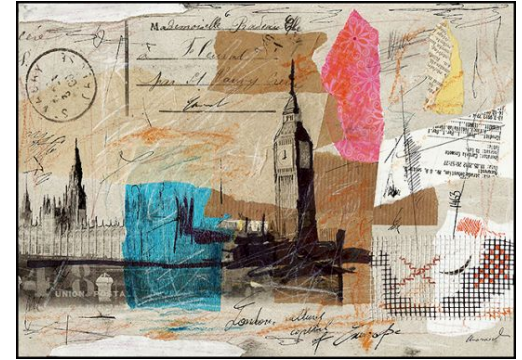
# A PLACE THAT IS SPECIAL TO YOU

Home, holidays, seaside, countryside, city, a familiar space



# LONDON

Landmarks, river, tourist spots, parks, shopping streets, transport, stations, events,



# AN INTERIOR

Living room, bedroom, kitchen, hallway, corridor, cafe, office, classroom, stairway, bathroom, waiting room, shed



## A PLACE FROM YOUR IMAGINATION

memories, dreams, paradise, illusions, made-up landscapes,  
imaginary cities,

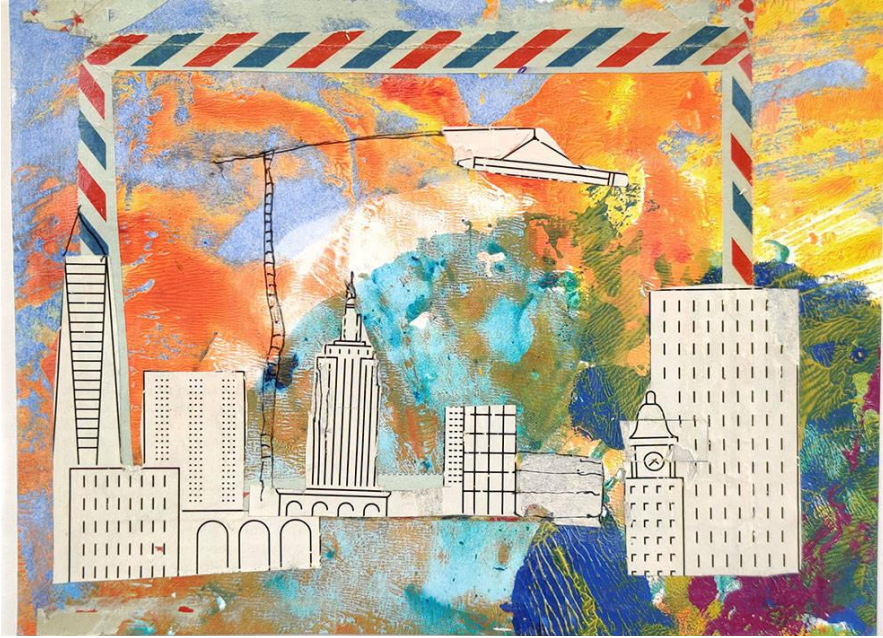


# OUR SCHOOL COMMUNITY

School building, exterior, interior, classrooms, corridors, stairwells, dining hall, classrooms, events, school grounds,







You can make your postcard using any of the following media:

paint, pencil, biro/pen, collage, pastel, ink, photo-collage, digital art, mixed-media.

Write a brief description of your artwork below, saying where it is and why you chose to depict it.



NAME:

---

FORM:

---

Write a brief piece of information on the back of the postcard saying where the place is and why you chose it.

Post your finished postcard in the postbox at reception along with your name and form.

**Deadline 31st  
January!**

# FAQs

When is the closing date?

All entries must be submitted by 31st January 2022

Where do I get a postcard?

You can pick up a blank postcard from the desk at reception.

What materials can I use?

You can make your postcard using any of the following media:

paint, pencil, biro/pen, collage, pastel, ink, photo-collage, digital art, mixed-media.

Can I submit a photograph?

Yes, definitely, but ideally we'd like you to do a bit more with it. For example it could be a photo collage or a mixed media piece that includes some photography.

Can it be an imaginary place?

Yes, you can make up a place, or it could be a place from a childhood memory/experience or even a dream.

Where do I post it?

There will be a postbox in reception for posting your entry. Don't forget to put your name and form on it!

Can there be people or animals in it?


The main subject should be a place, but you can certainly include a figure/figures/ animals within your artwork.

Does it have to be realistic?

Try and use some realistic elements. You can extend these and bring in some more stylised parts too.

How will it be judged?

Prizes will be awarded to a winning entry in each year group. There will also be a prize for the overall winning entry.



# A SENSE OF PLACE

Postcard Competition  
2021



Camden School for Girls

Any further questions, please ask a member of the Art Department!

**GOOD LUCK!**