

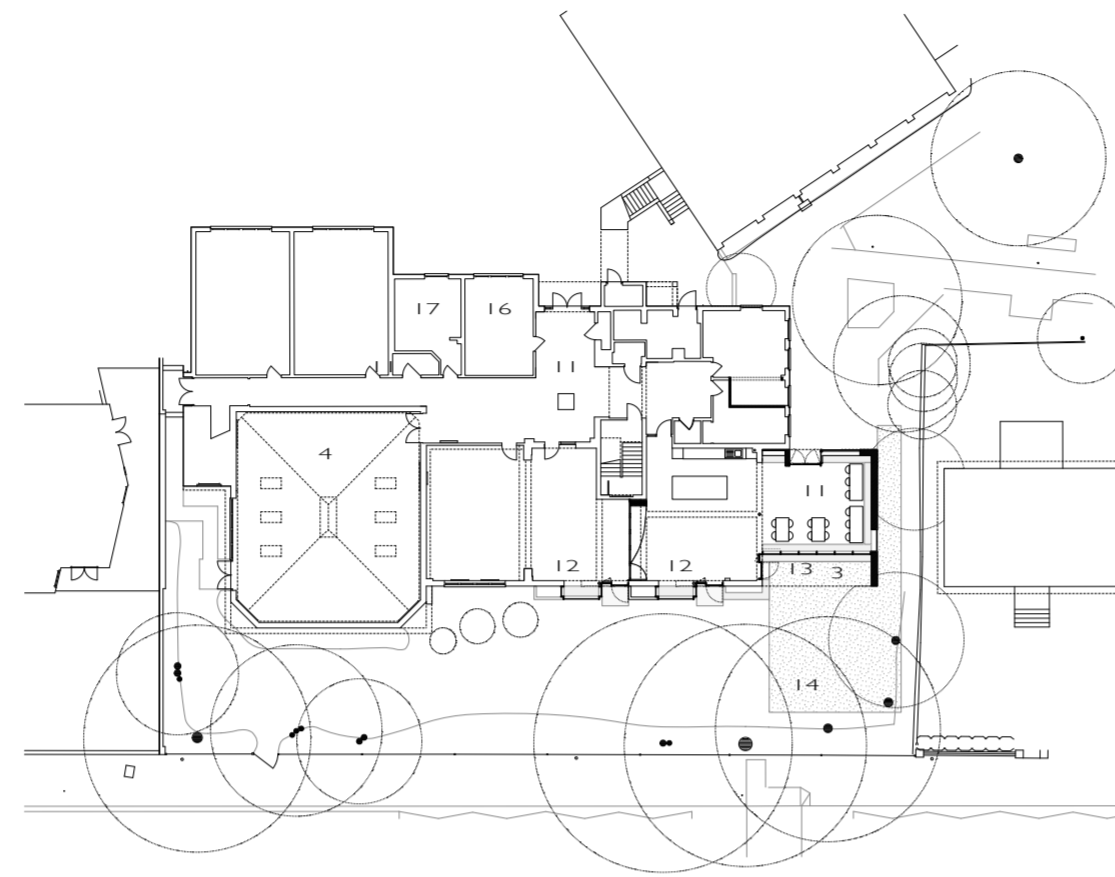
CAMDEN SCHOOL FOR GIRLS : PROPOSED EXTENSION & RENOVATIONS TO THE 6th FORM BUILDING

The proposal for the enlargement of the 6th Form Building involves a two story extension at the north-east corner of the building along and a redesign of the existing bay windows to the Common and Study Rooms at ground level.

The Common Room is extended and re-configured to include a moveable separation from the Study Room. A visual connection between the rooms will be maintained and the moveable partition will allow a larger single space to be created for events. The new bay windows will create places to sit, provide direct access from each area to the outdoor space and improve daylight and ventilation.

The extension to the Common Room will create more generous seating with good relationship to the school grounds and towards an improved outdoor area along Camden Road. A covered outdoor seating area is included outside the Common Room and is linked to a terrace.

The extension and reconfiguration of the first floor creates four good size teaching spaces along Camden Road, with an additional generous teaching space created by connecting the two small ICT rooms at the north-west corner.



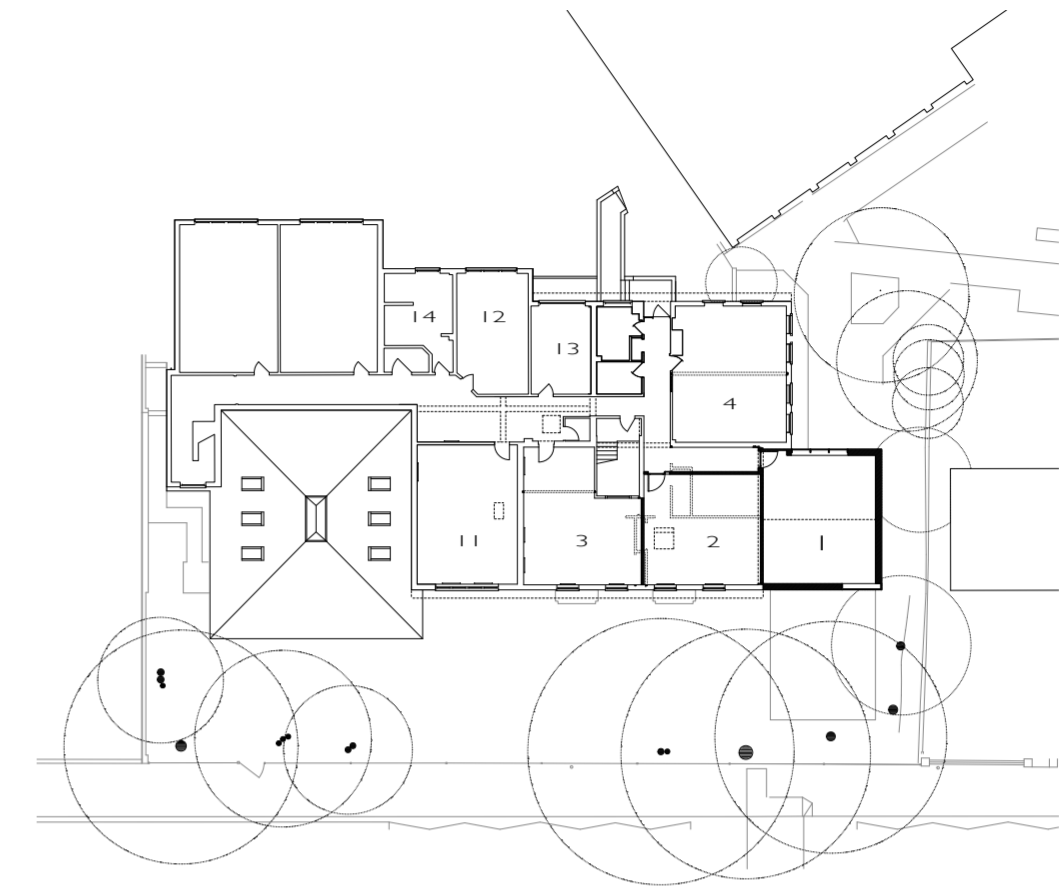
Ground Floor Plan

KEY EXISTING

- 1 EXISTING CLASSROOM - 43sqm
- 2 TEACHING SPACE
- 3 STAFF OFFICE
- 4 TOILETS
- 5 STORE
- 6 ASSEMBLY HALL BELOW

KEY PROPOSED

- 11 NEW CLASSROOM 1 - 48sqm
- 12 NEW CLASSROOM 2 - 45sqm each
- 13 NEW CLASSROOM 3 - 39sqm
- 14 NEW CLASSROOM 4 - 43sqm



Top Floor Plan

KEY EXISTING

- 1 EXISTING CLASSROOM - 43sqm
- 2 TEACHING SPACE
- 3 STAFF OFFICE
- 4 TOILETS
- 5 STORE
- 6 ASSEMBLY HALL BELOW

KEY PROPOSED

- 11 NEW CLASSROOM 1 - 48sqm
- 12 NEW CLASSROOM 2 - 45sqm each
- 13 NEW CLASSROOM 3 - 39sqm
- 14 NEW CLASSROOM 4 - 43sqm



Internal views of new Common Room (below) and new Classroom (above).



View of the extension of the 6th Form Building from Camden Road.



View of the extension of the 6th Form Building from the school's central campus.

CAMDEN SCHOOL FOR GIRLS : PROPOSED EXTENSION & RENOVATIONS TO THE MAIN BUILDING

We plan to extend the ground and 1st floor of the Main Building to create a two-level Entrance/Gallery, an enlarged Dining Hall and additional 2nd floor Staff Offices in front of the existing 1950s infill building.

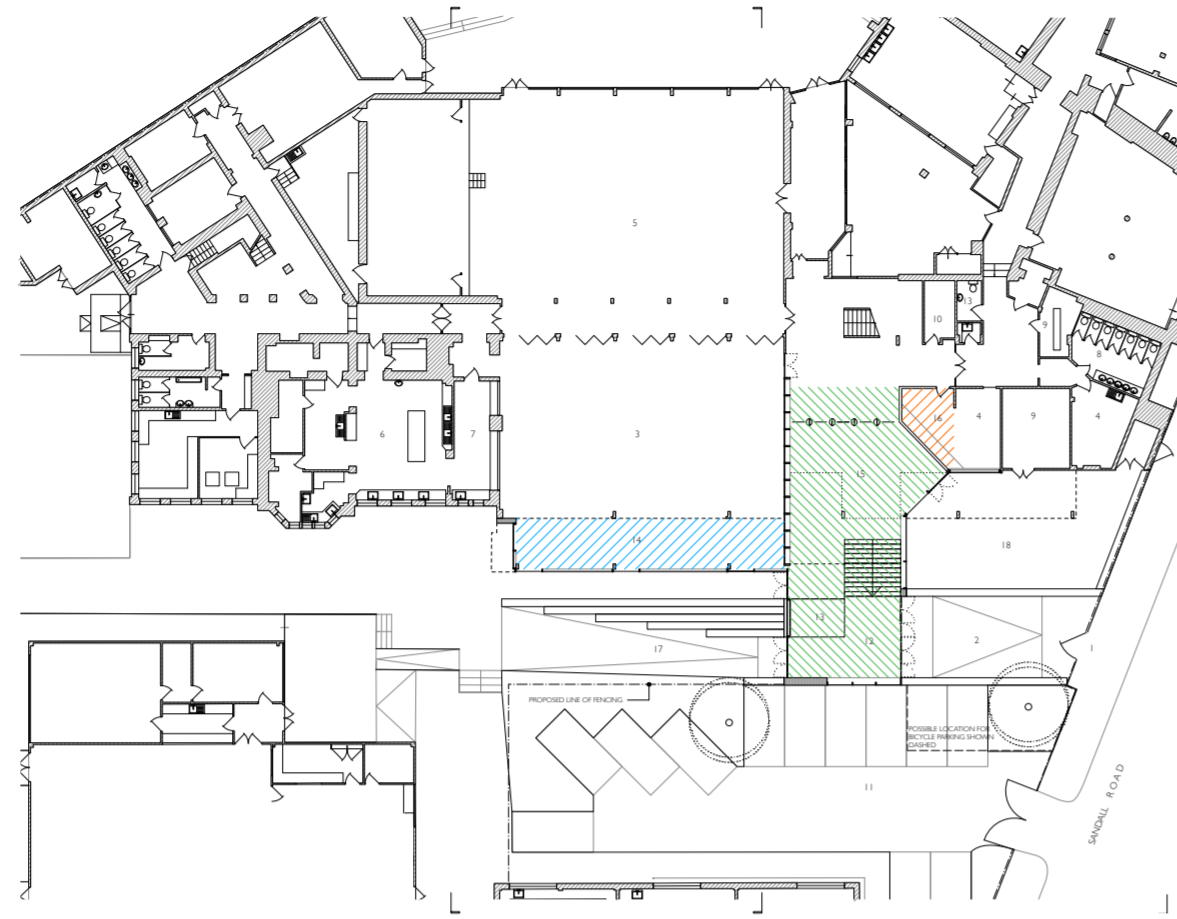
The extension will be welcoming and of high design quality. It will improve the outdoor area in front of the Main Building, accommodating new hard and soft landscape areas and external seating.

The extension building will provide a controlled single secure point of entry from the street to all parts of the school.

It will enlarge the existing reception area to create a beautiful Gallery that will open towards an external Courtyard to the north, currently the location of the bicycle shelters.

The Dining Hall will increase in size and be complemented by pleasant external seating along long terraced steps. The extension of the Staff Offices on the first floor will be directly above the ground level extension and have excellent quality of space and light.

A planning application was submitted in August 2015. Building completion is expected in early September 2016.



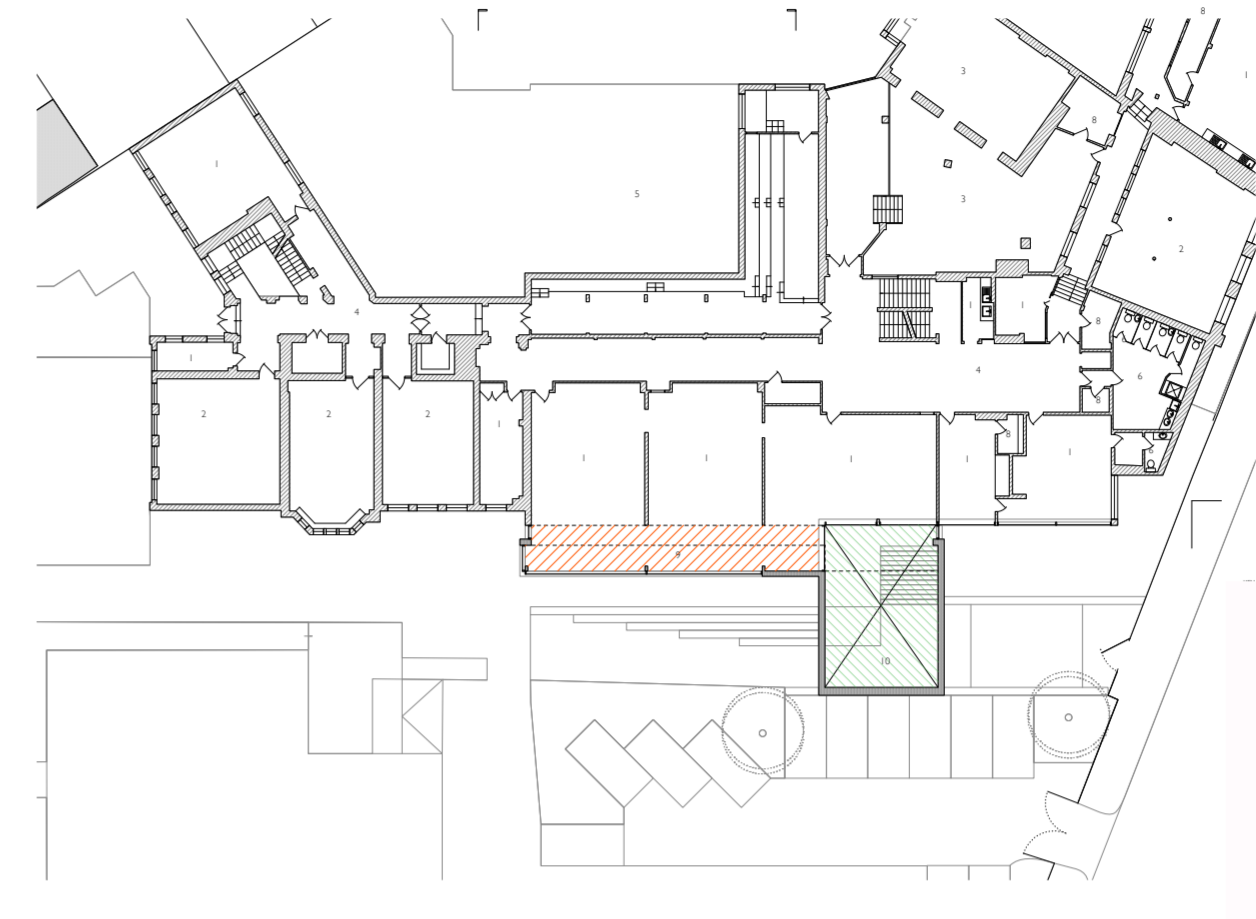
Ground Floor Plan

KEY EXISTING

- 1 GATED ENTRY
- 2 RAMPED SURFACE
- 3 DINNING HALL
- 4 ADMIN OFFICE
- 5 ASSEMBLY HALL
- 6 KITCHEN
- 7 SERVERY
- 8 TOILET
- 9 PLANT ROOM
- 10 STORE
- 11 CAR PARKING

KEY PROPOSED

- 12 ENTRANCE FOYER EXTENSION - 70sqm
- 13 SECURITY DESK
- 14 DINNING HALL EXTENSION - 50sqm
- 15 REMODELED LOBBY W/ BARRIER - 60sqm
- 16 MODIFIED ADMIN OFFICE
- 17 NEW STEPPED LANDSCAPE
- 18 COURTYARD GARDEN



First Floor Plan

KEY EXISTING

- 1 STAFF OFFICE
- 2 GENERAL TEACHING
- 3 LIBRARY
- 4 CORRIDOR
- 5 ASSEMBLY HALL MEZZANINE
- 6 TOILETS
- 7 PLANT ROOM
- 8 STORE

KEY PROPOSED

- 9 STAFF SOCIAL AREA - 45sqm
- 10 ENTRANCE FOYER OPEN TO BELOW



The new Entrance Building seen from Camden Road.



Internal view of Entrance area from the west, including Reception, Gallery and access to outside Courtyard.



Aerial view of extension to Main Building.



View of Dining Hall and Staff Office extension from the west, including a new landscaped seating area.



A welcoming Entrance Building that will provide a single secure point of entry from the street to all parts of the school.

Studio 23, Bickerton House
25-27 Bickerton Road, London N19 5JT
[e] info@ayarchitects.com | [t] 020 7272 8899
www.ayarchitects.com

AY Architects